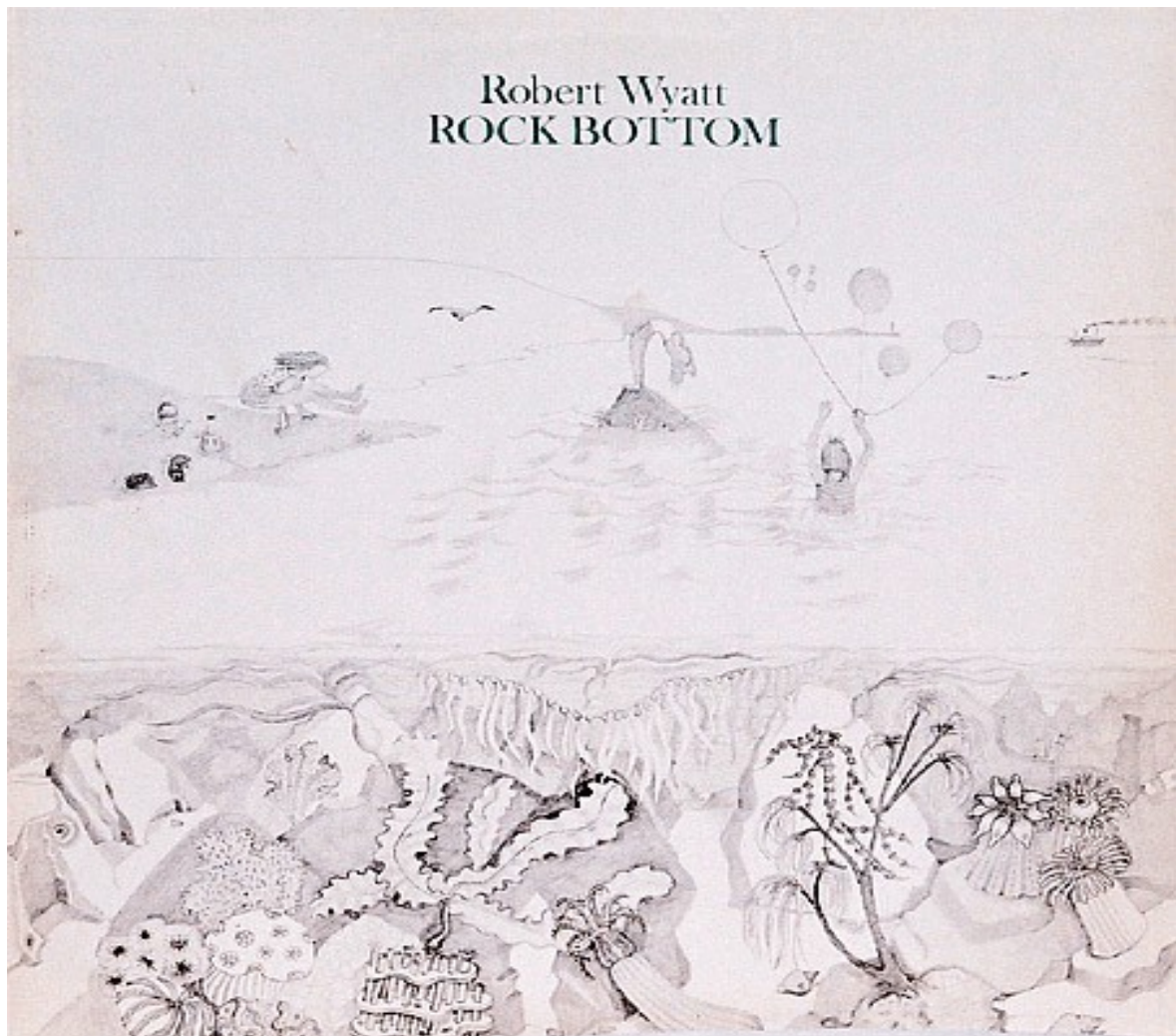


**Atelier PLAY IT AGAIN !**  
**Dirigé par Guillaume GILLES**  
**Université Paris 8 Vincennes – Saint-Denis**

# **Robert Wyatt**



## ***ROCK BOTTOM*** **SONGBOOK**

(1974 – 2024, 50ème anniversaire)

# ***ROCK BOTTOM***

## **SONGBOOK**

**Atelier PLAY IT AGAIN !**

**Dirigé par Guillaume GILLES**

**Université Paris 8 Vincennes – Saint-Denis**

**Ce songbook est un outil pédagogique mis à disposition des étudiant.e.s de master en Musique – Musicologie de l'atelier *Play It Again* dirigé par Guillaume GILLES.**

**Si l'ensemble du travail de relevé musical et formel s'appuie sur l'album en lui-même, il comporte également des adaptations pour le groupe qui a travaillé sur la conception du concert de restitution donné le 12 juin 2024 à l'Université Paris 8.**

**Bonne musique et merci à Robert Wyatt**

**pour son merveilleux album.**

# 1 - Sea Song - Robert Wyatt (Rock Bottom - 1974)

**BPM: 110**

**4/4**

## Introduction

	Eb	F7	BbMaj7	EbMaj7
C<sub>sus2</sub> - G<sub>m/Bb</sub>	A7<sub>sus4</sub>	A7<sub>sus4</sub>	D7<sub>sus4</sub>	
D7<sub>sus4</sub>	E7#5	E7#5	E7#5	
E7#5				

## Couplet 1

|| F#min | FMaj | Amin/E | Emin || X2

You look different every time you come  
from the foam-crested brine  
It's your skin shining softly in the moonlight

## Couplet 2

|| F#min | FMaj | Amin/E | Emin || X2

Partly fish, partly porpoise, partly baby sperm  
whale  
Am I yours? Are you mine to play with?

## Couplet 3 (piano Octave inférieure)

|| F#min | FMaj | Amin/E | Emin || X2

Joking apart when you're drunk  
You're terrific when you're drunk  
I like you mostly late at night - you're quite all  
right

## Pont 1

	Eb	F7	Bbmaj7	Ebmaj7
Cm6 Cm6/Bb	Am7b5	Am7b5	D7	
D7				

But I can't understand the different you  
In the morning when it's time to play  
at being human for a while  
Please smile!

## Instrumental (impro piano + orgue)

|| E7#5 | E7#5 | E7#5 | E7#5 ||

## Gamme ton par ton pour la transition

## Couplet 4 (piano accords plaqués)

|| F#min | FMaj | Amin/E | Emin || X2

You'll be different in the spring, I know  
You're a seasonal beast  
Like the starfish that drift in with the tide, with the  
tide

## Couplet 5 (piano Octave inférieure)

|| F#min | FMaj | Amin/E | Emin || X2

So until your blood runs to meet the next full moon  
Your madness fits in nicely with my own, with my  
own

## Couplet Coda (entrée voix mellotron)

|| F#min | FMaj | Amin/E | Fmin ||

Your lunacy fits neatly with my own, my very own

## Instrumental 2 (entrée synthé/orgue basses)

|| Amin | Fmin | Amin | Fmin || X3

## Outro (improvisation vocale)

|| 4/4 D || 3/4 E7/D || 4/4 DMaj7 ||  
|| 4/4 D || 3/4 E7/D || 3/4 DMaj7 ||

We're not alone...

## Ajout Riff mélodique synthétiseur avec portamento

## Ajout "contrepoint" Riff

## Outro:

Fade Out Drums + Basse

Riff voix + violoncelle + sax  
Accompagnement guitare.

**2 - A Last Straw - Robert Wyatt**  
**(Rock Bottom - 1974)**

**BPM: 130**

**4/4**

**Introduction : Batterie + Basse + SAX**

**Grille avec 2X 6/4**

	Cm		Cm		Cm		Cm	
	Cm		Cm		Cm		Cm	
	D7 <sub>sus2</sub>		D7 <sub>sus2</sub>	6/4	D7 <sub>sus2</sub>			
	D7 <sub>sus2</sub>		D7 <sub>sus2</sub>	6/4	D7 <sub>sus2</sub>			
	Db <sub>sus2</sub>		Db <sub>sus2</sub>		Db <sub>sus2</sub>		Db <sub>sus2</sub>	
	Db <sub>sus2</sub>		Db <sub>sus2</sub>		Db <sub>sus2</sub>		Db <sub>sus2</sub>	

**Grille Refrain**

	G <sub>sus4</sub>		G <sub>sus4</sub>		Ab		Ab	
	F <sub>m</sub>		F <sub>m</sub>		G		G	

**Couplet 1 (1 seule X 6/4)**

	Cm		Cm		Cm		Cm	
	Cm		Cm		Cm		Cm	
	D7 <sub>sus2</sub>		D7 <sub>sus2</sub>	6/4	D7 <sub>sus2</sub>			
	D7 <sub>sus2</sub>		D7 <sub>sus2</sub>		D7 <sub>sus2</sub>		D7 <sub>sus2</sub>	
	Db <sub>sus2</sub>		Db <sub>sus2</sub>		Db <sub>sus2</sub>		Db <sub>sus2</sub>	
	Db <sub>sus2</sub>		Db <sub>sus2</sub>		Db <sub>sus2</sub>		Db <sub>sus2</sub>	

Seaweed tangled in our home from home  
Reminds me of your rocky bottom  
Please don't wait for the paperweight  
Err on the good side  
Touch us when we collapse

**Refrain 1**

	G <sub>sus4</sub>		G <sub>sus4</sub>		Ab		Ab	
	F <sub>m</sub>		F <sub>m</sub>		G		G	

Into the water we'll go head over heel  
We'll not grow fat inside the mammary gland

**Improvisation 1 (Voix)**

**Grilles identiques à celles de l'introduction  
(2X 6/4)**

**Improvisation 2 VIOLONCELLE**

**Grilles identiques à celles de l'introduction  
(2X 6/4)**

**Couplet 2 (1 seule X 6/4)**

Seaweed tangled in our home from home  
Reminds me of your rocky bottom  
Please don't wait for the paperweight  
Err on the good side  
Touch us when we collapse

**Refrain 2**

Into the water we'll go head over heel  
A head behind me buried deep in the sand

**Improvisation 3 GUITARE**

**Grille couplet identique à celles de l'intro.  
(2X 6/4)**

**Outro : Grille Refrain avec descente  
tons.**

	G <sub>sus4</sub>		G <sub>sus4</sub>		Ab		Ab	
	F <sub>m</sub>		F <sub>m</sub>		Réb Si		La Sol	
	Fa Mib		Réb Si		<b>La</b>	<b>Start Riff Guitare</b>		

### 3 - Little Red Riding Hood Hit The Road – Robert Wyatt (Rock Bottom – 1974)

**BPM: 80 Métriques: 9/8 – 4/4**

**Introduction**

**Riff Ad lib.**

A11 A11 A11 A11 AMaj A9



Trompette > Piano > Percus > Basse > Voix

**RIFF VOIX pour la transition**

**Instrumental**

	AMaj	BbMaj3/A	BbMaj7/A	Bb6/A	
	D	Dm	Am	BbMaj7	
	A A sus4	BbMaj3/A	BbMaj7/A	Bb6/A	
	D	Dm	Am	BbminMaj7/A	

**Thème vocal**

	A A sus4	Gm6/A	Gm7/A	Bb6/A	
	D	Dm	Am	BbM7/A	

**Couplet 1**

	A A sus4	Gm6/A	Gm7/A	Bb6/A	
	D	Dm	Am	Bbmin	

Orlan don't tell me, oh no  
 Don't say oh God  
 Don't tell me oh dear me  
 Heaven's above  
 Oh no  
 I can't stand it

**Couplet 2**

	A A sus4	Gm6/A	Gm7/A	Bb6/A	
	D	Dm	Am	Bbmin/F	

Stop please  
 oh deary me  
 What in heaven's name?  
 Oh blimey mercy me  
 Who are we?  
 Oh dear  
 Oh stop it, stop it

**Pont / Nonsense**

	BbMaj7	Am	Dm	D7	
	Bb6	Bb	Asus4	Asus4 A	
	BbminMaj7	Am7	Dm	D7	
	Bb6	Gm7/Bb	Asus4	Asus4 A	

*He wants / He was out /  
 He walk / He ever walk /  
 He needs a inner walk and flavor if awk  
 And we block it  
 Ouuuuu it's in my smart look  
 That lack but is night  
 He lives or in my night or walk as night  
 Was like a nightmare*

**Fin du pont**

	BbMaj7	Am	Dm	D7	
	Bb6	Bb	Asus4	Asus4 A	
	BbMaj7	Am	Dm	D7	
	Bb6	Bb	Asus4	Asus4 A	

You've been so kind  
 I know I know  
 So why did I hurt you?  
 I didn't mean to hurt you  
 But I'll keep trying  
 And I'm sure you will toooooooooooooo....

**Voix parlée**

	BbMaj7	Am	Dm	D7	
	Bb6	Bb	Asus4	Asus4 A	

I want it I want it I want it give it to me  
 I give it you back when I finish the lunchtea  
 I lie in the road try to trip up the passing cars  
 Yes me and the hedgehog  
 We bursting the tires all day  
 As we roll down the highway towards the setting sun

**Outro: Cycle en boucle / Stop sur dernier A**

	BbMaj7	Am	Dm	D7	
	Bb6	Bb	Asus4	Asus4 A	

**Phrase violoncelle pour la transition**

## 4 - Alifib - Robert Wyatt (Rock Bottom - 1974)

**Partie 1: 4/4 = noire 91 BPM**  
**Partie 2: 6/8 = croche 137 BPM**

### Introduction :

la voix chante ternaire, la basse joue binaire

### **Riff Basse x2 + Alifi (voix soufflée)**

|| E11 mi si fa# la | E5 mi si mi si | E11 | E5 ||

### **Ajout Orgue**

|| E11 | E5 | E11 | E5 ||X4

### Impro Guitare de 32 mesures en GbMaj

Guitare: son rond et étouffé

Walking Bass

**Arriver sur une basse : Si > Fa (2'29) puis Si > Octavié pour annoncer la modulation vers Sib Maj.**

**Orgue modul: BMaj > Bmin**

### Couplet 1 (orgue = pédale de Si) :

|| Bmin | C#dim | A#dim | G ||X2

Not nit not nit no not

Nit nit folly bololey

Alifi my larder

Alifi my larder

### Impro instrumentale (orgue + guitare)

|| Bmin | C#dim | A#dim | G ||X1

### Couplet 2 (impro orgue + guitare)

|| Bmin | C#dim | A#dim | G ||X2

I can't forsake you

Or Forsqueak you

Alifi my larder

Alifi my larder

### Couplet 3

|| Bmin | C#dim | A#dim | G  
||X2

Confiscate

Or make you late you you

Alifi my larder

Alifi my larder

### Couplet 4

|| Bmin | C#dim | A#dim | G  
||X1

Not nit not nit no not

Nit nit folly bololy

### Impro instrumentale

|| Bmin | C#dim | A#dim | G ||X1  
**Petite transition mélodique tutti: sol sib ré sol Fa#**

### Couplet 5 (avec voix octaviée)

|| Bmin | C#dim | A#dim | G ||X4

Burlybunch, the water mole

Hellyplop and fingerhole

Not a wossit bundy, see

For jangle and bojangle

Trip trip Pip pippy pippy pip pip landerim

Alifi my larder

Alifi my larder

### Impro instrumentale

|| Bmin | C#dim | A#dim | G ||X4

### Outro :

**Enchaînement vers Alifie**

**Rester sur GMaj**

**5 - Alifie - Robert Wyatt**  
**(Rock Bottom - 1974)**

**Métrique : 6/8 = 150 BPM**

Démarre sur la fin de Alifib

**Free Feeling / Noise / Atempo**

**Puis Modulations:**

De GMaj vers Fmin

**Tourne tout au long de la chanson**

|| Emin | F#dim | D#dim/A | Cmin13 ||

Basse ascendante et pédale de Mi

Not nit  
not nit  
no not Nit nit  
Folly bololey  
Alifi my larder  
Alifi my larder

I can't forsake you or  
Forsqueak you  
Alifi my larder  
Alifi my larder

Confiscate or make you  
Late you you  
Alifi my larder  
Alifi my larder

Not nit not nit no not  
Nit nit folly bololy

**Impro Sax**

Burlybunch, the water mole  
Hellyplop and fingerhole  
Not a wossit bundy, see ?

For jangle and bojangle  
Trip trip  
Pip pippy pippy pip pip landerim  
Alifi my larder  
Alifi my larder

**Riff sax puis Solo Sax**

**Ajout Riff Piano**

**Climax NOISE - OUT / réverbe delay**

I'm not your larder,  
jammy jars and mustard.

I'm not your dinner,  
you soppo old custard.

**Effacement des instruments**

And what's a bololey  
when it's a folly?

**Basse distorsion**

I'm not your larder,  
I'm your dear little dolly.  
But when plops get too helly  
I'll fill up your belly.  
I'm not your larder,  
I'm Alife your guarder.

**Ne reste plus que la basse fuzz.**

**6 - Little Red Robin Hood Hit The Road – Robert Wyatt  
(Rock Bottom – 1974)**

**Métrique : 4/4 = 86 BPM**

**Partie 1:**

Démarre sur la fin de *Alifie*

**Tourne tout au long de la chanson**

|| 4/4 Emin || 3/4 Emin | E || 4/4 F#Dim | SolLaDo |

| FaSolSi | SolFaLaSi | Amin7 | Bsus4 |

| B7sus4/C | B7sus4/B | B7sus4 | B7 ||

**Couplet 1 :**

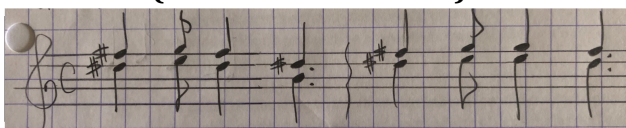
In the garden of England  
Dead moles lie inside their holes  
The dead-end tunnels  
Crumble in the rain  
Underfoot  
Innit a shame?

**Instrumental 1 (grille du couplet)**

**Instrumental 2 (Idem)**

**Pont : B7 + Riffs Guitare + ???**

**(Harmonisation voix)**



Can't you see them?  
Can't you see them?  
Roots can't hold them  
Bugs console them

Can't you see them?  
Can't you see them?  
Roots can't hold them  
Bugs console them

**Climax X4**

Can't you see them?  
Can't you see them?  
Can't you see them?  
Can't you see them?

**Partie 2 :**

|| BbMaj | EbMaj/B | BbMaj | EbMaj/B ||

I fight with the handle of my little brown broom  
I pull out the wires of the telephone  
I hurt in the head and I hurt in the acting bone  
Now I smash up the telly with remains of the  
broken phone

I fighting for the crust of the little brown loaf  
I want it I want it I want it give it to me  
I give it you back when I finish the lunch tea

**Phrase mélodique violon**

I lie in the road try to trip up the passing cars  
Yes me and the hedgehog We bursting the tyres all  
day

**Phrase mélodique violon**

As we roll down the highway towards the setting  
sun  
I reflect on the life of the Highwayman yum yum  
Now I smash up the telly and what's left of The  
broken phone

**Violon dissonant**

**Fin**